

(1) WALLS:- INSULATION IN CAVITY

Ground Floor - Insulation above slab
(Dense blockwork)

XT - CTPIR - 1.01a - Rev 3 - Wall-Floor

THERMAL PERFORMANCE
CHECKLIST
(TICK ALL)

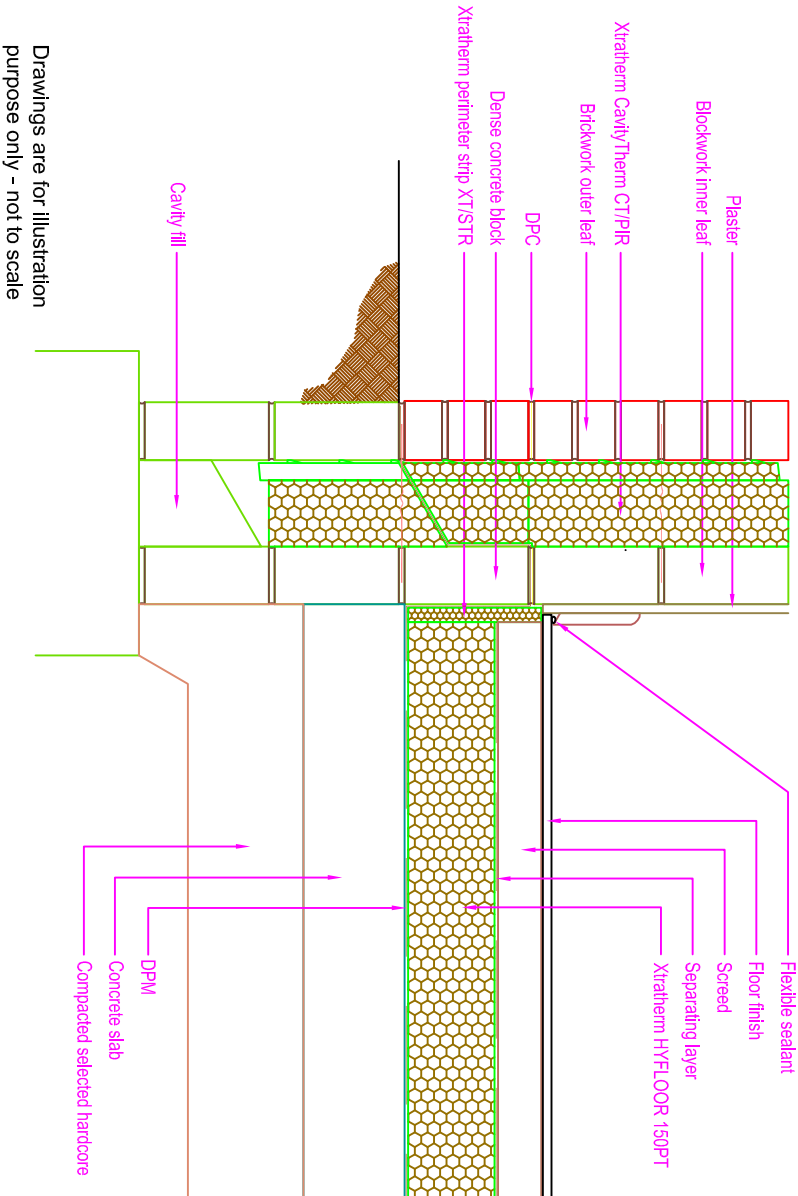
ENSURE CT/PIR IS SECURED FIRMLY AGAINST INNER LEAF OF CAVITY WALL

HYFLOOR 150PT FLOOR INSULATION TO TIGHTLY ABUT XT/STR(Perimeter Strip)

ENSURE CT/PIR IS INSTALLED AT 225mm BELOW TOP OF XT/HYF 150PT

ENSURE 25MM XT/STR (Perimeter Strip) TIGHTLY ABUTS BLOCKWORK WALL

Xtratherm



Drawings are for illustration purpose only - not to scale

AIR BARRIER - CONTINUITY
CHECKLIST
(TICK ALL)

SEAL BETWEEN WALL AND FLOOR AIR BARRIER WITH A FLEXIBLE SEALANT
OR
SEAL GAP BETWEEN SKIRTING BOARD AND FLOOR WITH FLEXIBLE SEALANT

SEAL ALL PENETRATIONS THROUGH AIR BARRIER USING A FLEXIBLE SEALANT

GENERAL NOTES

Keep cavities clean of mortar spots and other debris during construction
Detail applicable:- Ground-bearing floor, raft foundation, in-situ suspended ground floor slab, pre-cast suspended ground floor, HYFLOOR 150PT above slab with screed floor finish



NSAI

CERT No: IAB/TM/01
Thermal Modelers Scheme

CavityTherm CT/PIR	100mm	125mm	150mm
Psi Value ψ (W/mK)	0.167	0.165	0.165
Temperature Factor (f)	0.811	0.823	0.832
U-Value (W/m ² K)	0.20	0.16	0.13
U-Value Floor (W/m ² K)			0.11 - 0.14

To be read in conjunction with the Acceptable Construction Details
Any changes to the above construction may change the calculated values