

(1) WALLS:- INSULATION IN CAVITY

Open- Prestressed concrete lintel
(Dense blockwork)

XT - CTPIR - 1.23.2 - Rev 3 - Lintel

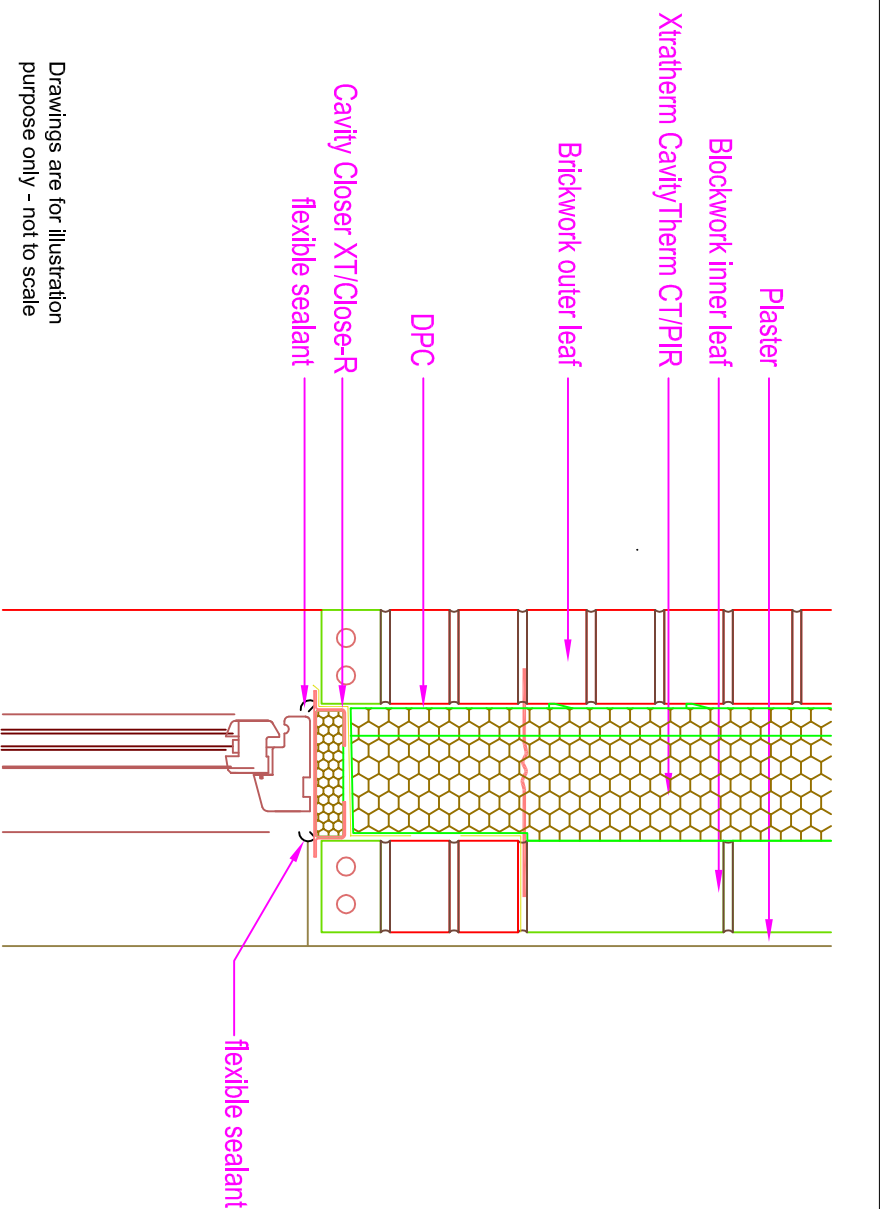
THERMAL PERFORMANCE
CHECKLIST
(TICK ALL)

ENSURE CT/PIR IS SECURED FIRMLY AGAINST INNER LEAF OF CAVITY WALL

INSTALL PROPRIETARY CAVITY CLOSER XT/CLOSER

ENSURE ALL GAPS AROUND AND BETWEEN LINTEL ARE TIGHTLY PACKED WITH INSULATION

Xtratherm



Drawings are for illustration purpose only - not to scale

AIR BARRIER - CONTINUITY
CHECKLIST
(TICK ALL)

SEAL ALL PENETRATIONS THROUGH AIR BARRIER USING A FLEXIBLE SEALANT

IF FORMING THE AIR BARRIER TO THE WALLS WITH A BLOCKWORK INNER LEAF OR A SCRATCH COAT ON BLOCKS, INSTALL A FLEXIBLE SEALANT BETWEEN CAVITY CLOSER AND BLOCKWORK WALL

APPLY FLEXIBLE SEALANT TO ALL INTERFACES BETWEEN INTERNAL AIR BARRIER AND WINDOW/DOOR FRAME MEMBERS

GENERAL NOTES

Keep cavities clean of mortar spots and other debris during construction



NSAI

CERT No.: IAB/TM/01
Thermal Modelers Scheme

CavityTherm CT/PIR	100mm	125mm	150mm
Psi Value ψ (W/mK)	0.002	0.003	0.004
Temperature Factor (f)	0.973	0.959	0.951
U-Value (W/m ² K)	0.20	0.16	0.13

To be read in conjunction with the Acceptable Construction Details
Any changes to the above construction may change the calculated values