

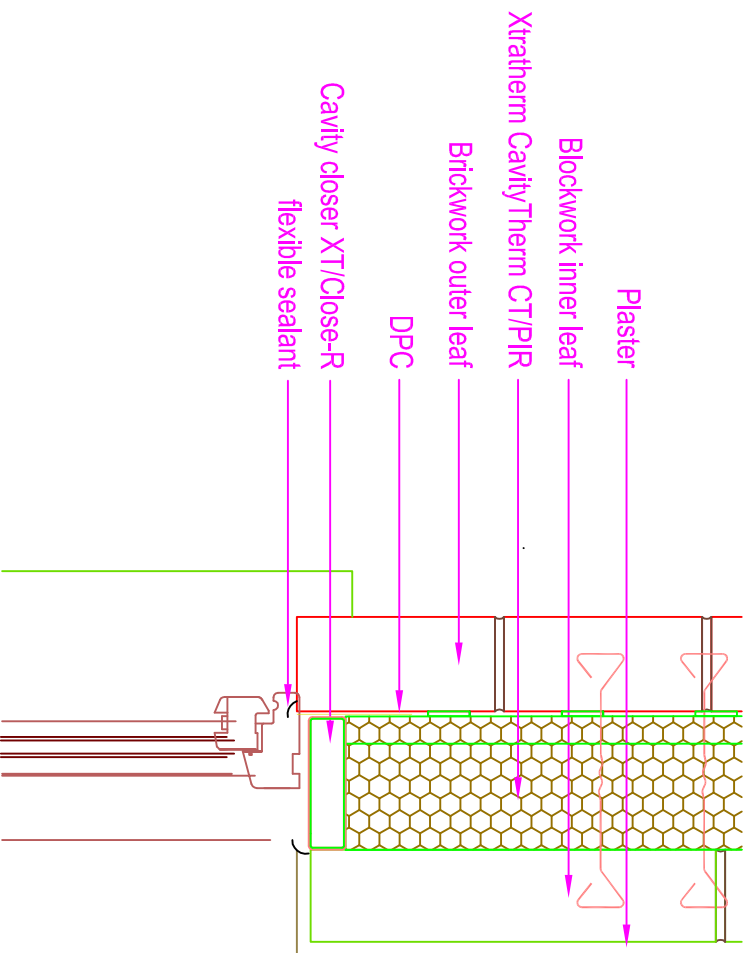
THERMAL PERFORMANCE

CHECKLIST
(TICK ALL)

ENSURE CT/PIR IS SECURED FIRMLY AGAINST INNER LEAF OF CAVITY WALL

INSTALL PROPRIETARY CAVITY CLOSER XT/CLOSE-R

Xtratherm



Drawings are for illustration purpose only - not to scale

AIR BARRIER - CONTINUITY

CHECKLIST
(TICK ALL)

SEAL ALL PENETRATIONS THROUGH AIR BARRIER USING A FLEXIBLE SEALANT

APPLY FLEXIBLE SEALANT TO ALL INTERFACES BETWEEN INTERNAL AIR BARRIER AND WINDOW/DOOR FRAME MEMBERS

IF A PROPRIETARY CAVITY CLOSER IS USED, WHEN FORMING THE AIR BARRIER TO THE WALLS WITH A BLOCKWORK INNER LEAF OR A SCRATCH COAT ON BLOCKS, INSTALL A FLEXIBLE SEALANT BETWEEN THE CAVITY CLOSER AND THE BLOCKWORK WALL

GENERAL NOTES

Keep cavities clean of mortar spots and other debris during construction



NSAI

CERT No: IAB/TM/01
Thermal Modelers Scheme

CavityTherm CT/PIR	100mm	125mm	150mm
Psi Value ψ (W/mK)	0.003	0.004	0.005
Temperature Factor (f)	0.973	0.960	0.952
U-Value (W/m ² K)	0.20	0.16	0.13

To be read in conjunction with the Acceptable Construction Details
Any changes to the above construction may change the calculated values