

Thermal Bridging

Opening - Jamb with returned block closer

ACD CODE 1.24

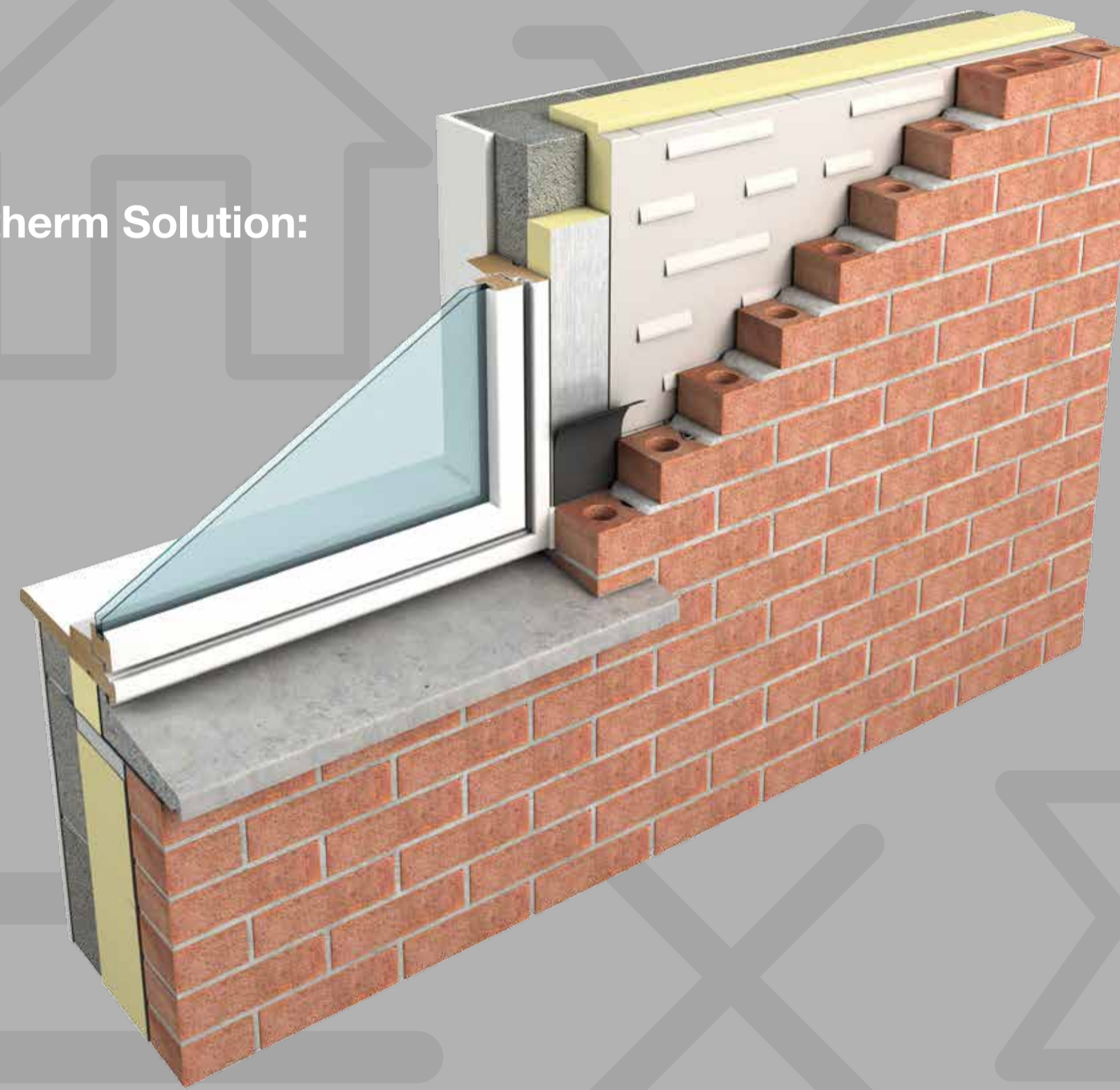
Example House:



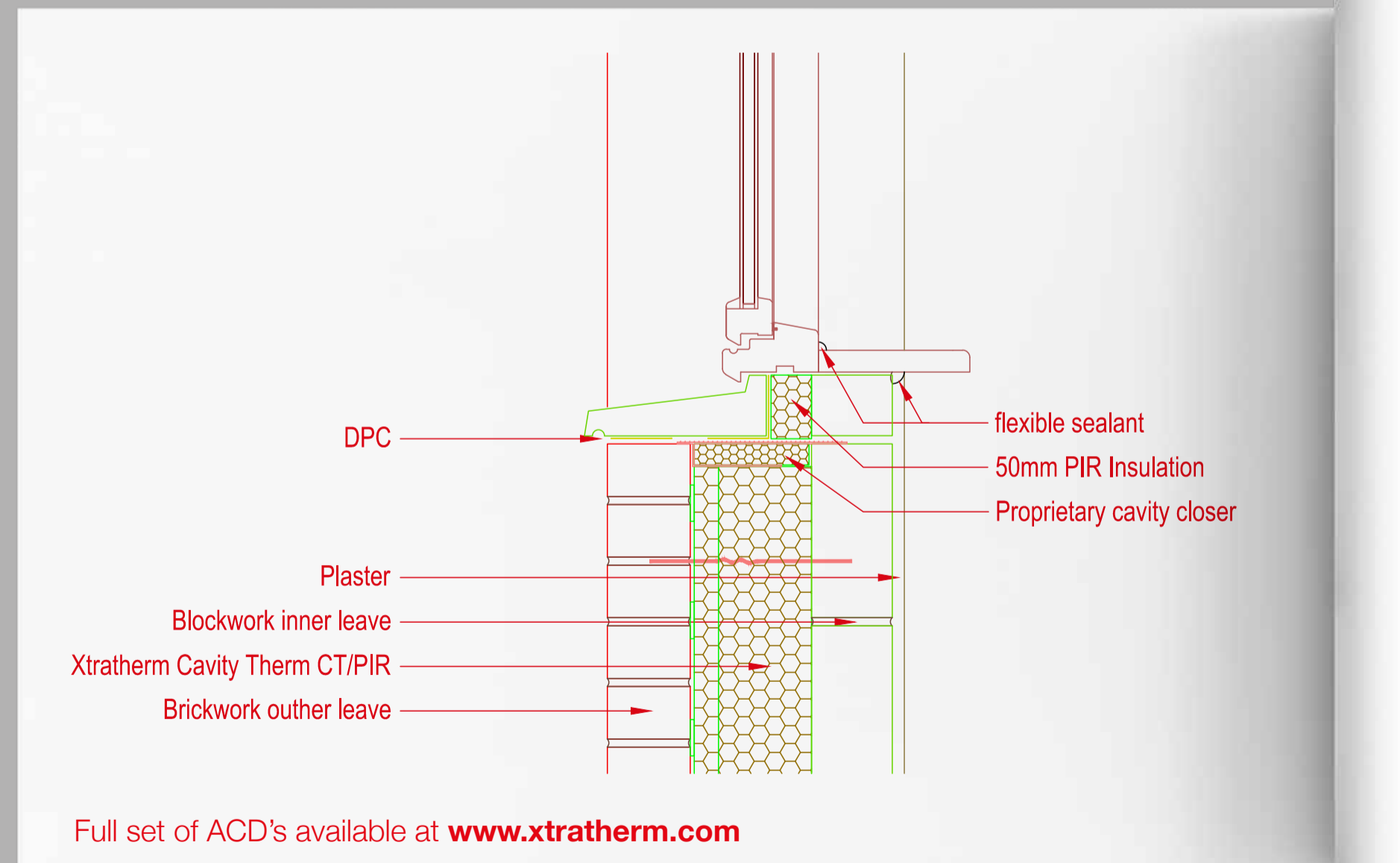
ACD Identified:



Xtratherm Solution:



Accredited Detail:



Full set of ACD's available at www.xtratherm.com

Xtratherm PSI Values Using Accredited Details*

CavityTherm CT/PIR	125mm	150mm
PSI Value Ψ (W/mk)	0.024	0.030
Temperature Factor (f)	0.976	0.975
U-Value (W/m ² k)	0.16	0.13

*Using Dense blocks

Checklist:

Thermal Performance -

- Ensure CT/PIR is secured firmly against inner leaf of cavity wall.
- Return block at reveal and install 50mm Xtratherm closer strip.

Air Barrier - Continuity -

- Seal all penetrations through air barrier using a flexible sealant
- Apply flexible sealant to all interfaces between internal air barrier and window/door frame members
- If a proprietary cavity closer is used, when forming the air barrier to the walls with a block work inner leaf or a scratch coat on blocks, install a flexible sealant between the cavity closer and the block work wall.

General Notes:

Keep cavities clean of mortar spots and other debris during construction.

Y Value Calculation Table

Total Envelope Area	356.160		
Junction	L	Ψ	L x Ψ
Lintels	17.840 x	0.001 =	0.02
Sill	15.080 x	0.036 =	0.54
Jamb with return block	48.370 x	0.030 =	1.45
Ground Floor	39.200 x	0.165 =	6.47
Intermediate Floor within a dwelling	39.200 x	0.001 =	0.04
Sloped (Insulation at eaves)	29.600 x	0.034 =	1.01
Sloped (Insulation at gables)	13.440 x	0.071 =	0.95
Corner (Normal)	19.400 x	0.035 =	0.68
		Total =	11.16
	L x Ψ / Total Area	=	0.0313

